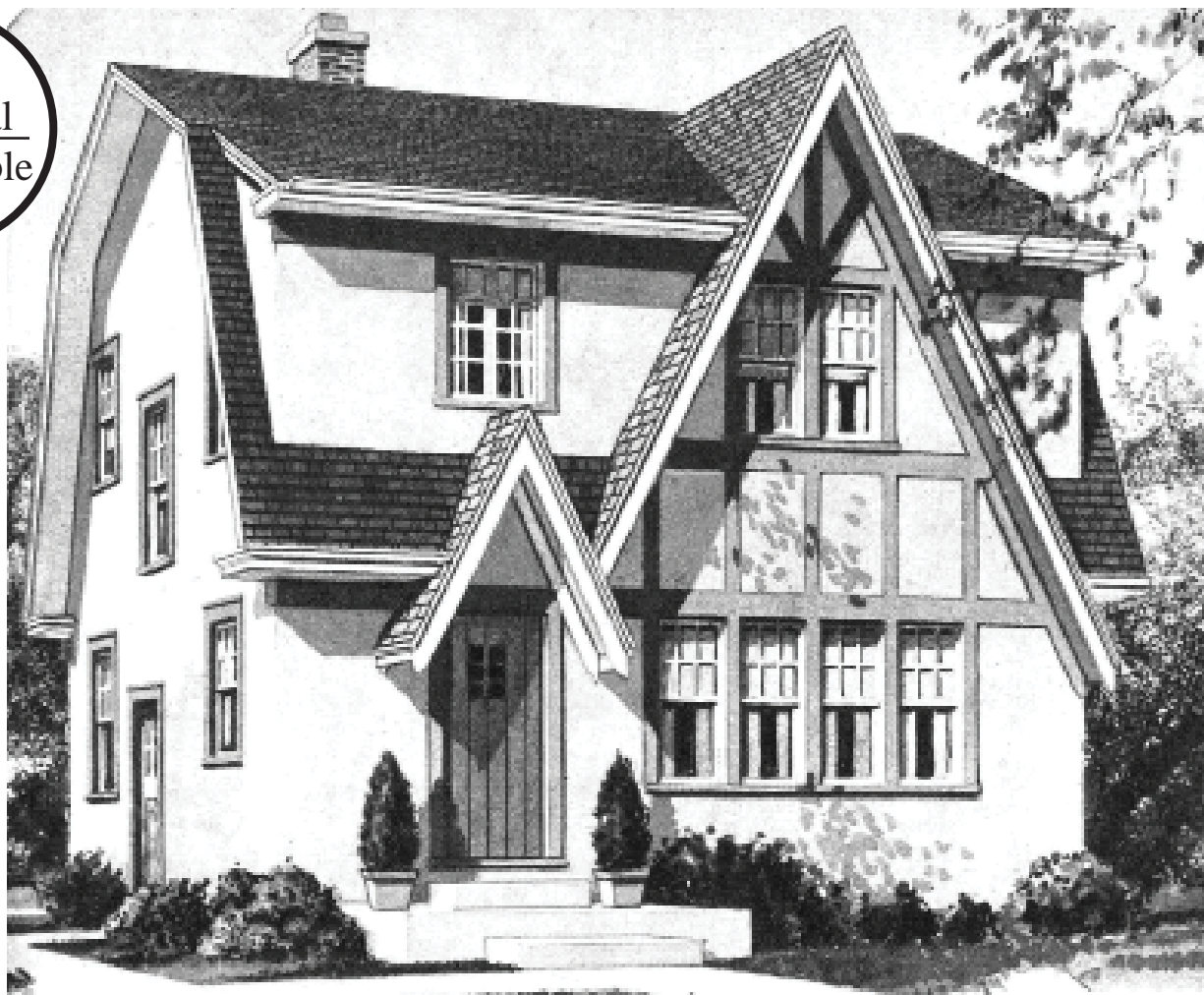


Dutch  
Colonial  
Side Gable



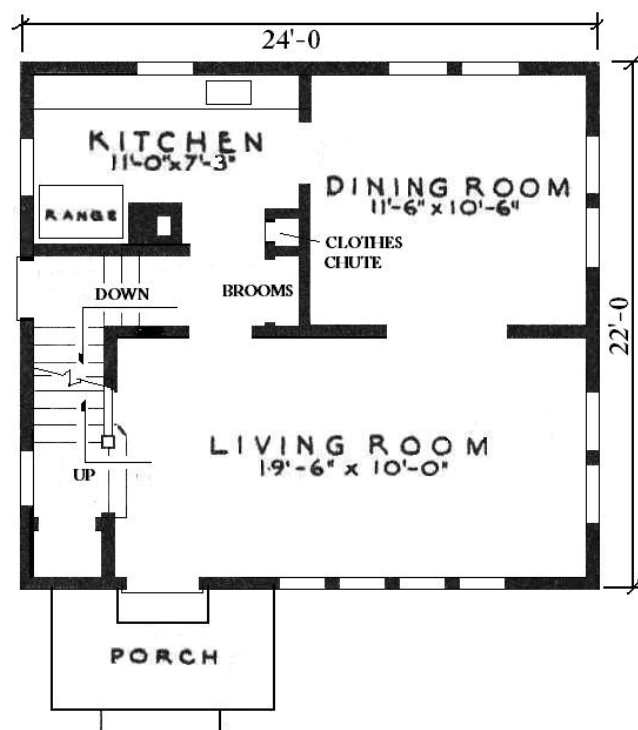
### ***Cranford (1929-1931 Ready-Cut)***

1929 (\$1728), 1930 (\$1875), 1931 (\$1855)

The *Cranford* is a distinctive design unique to Montgomery-Ward, easily identified by the large faux front gable that disguises the gambrel roof. Although the model house featured a stucco exterior accentuated by half-timbering, shingles and wood siding were also popular. The living room can have four narrow double-hung sash windows or three standard size double-hung sash windows.

*“It is astonishing how much space can be tucked away under a gambrel roof. The Cranford is the ideal home for a narrow or shallow lot. For it is only 24 wide and 22 feet deep, yet it has six rooms unusually big and pleasant. The English half timbered style is always distinctive. Here it is carried out in stucco with gable beams in dark weathered brown. The steep gable, hooded entrance with its timbered door and the casement window above are distinguishing details seldom found in a house which can be built for so little.”*

- 1930 Wardway Homes



This *Cranford* in Charleston, West Virginia is a perfect example with stucco exterior accentuated by half-timbering, four narrow living room windows, and timber door (photograph by Rose Thornton).



A Valspario, Indiana *Cranford* (photograph by Dale Wolicki).